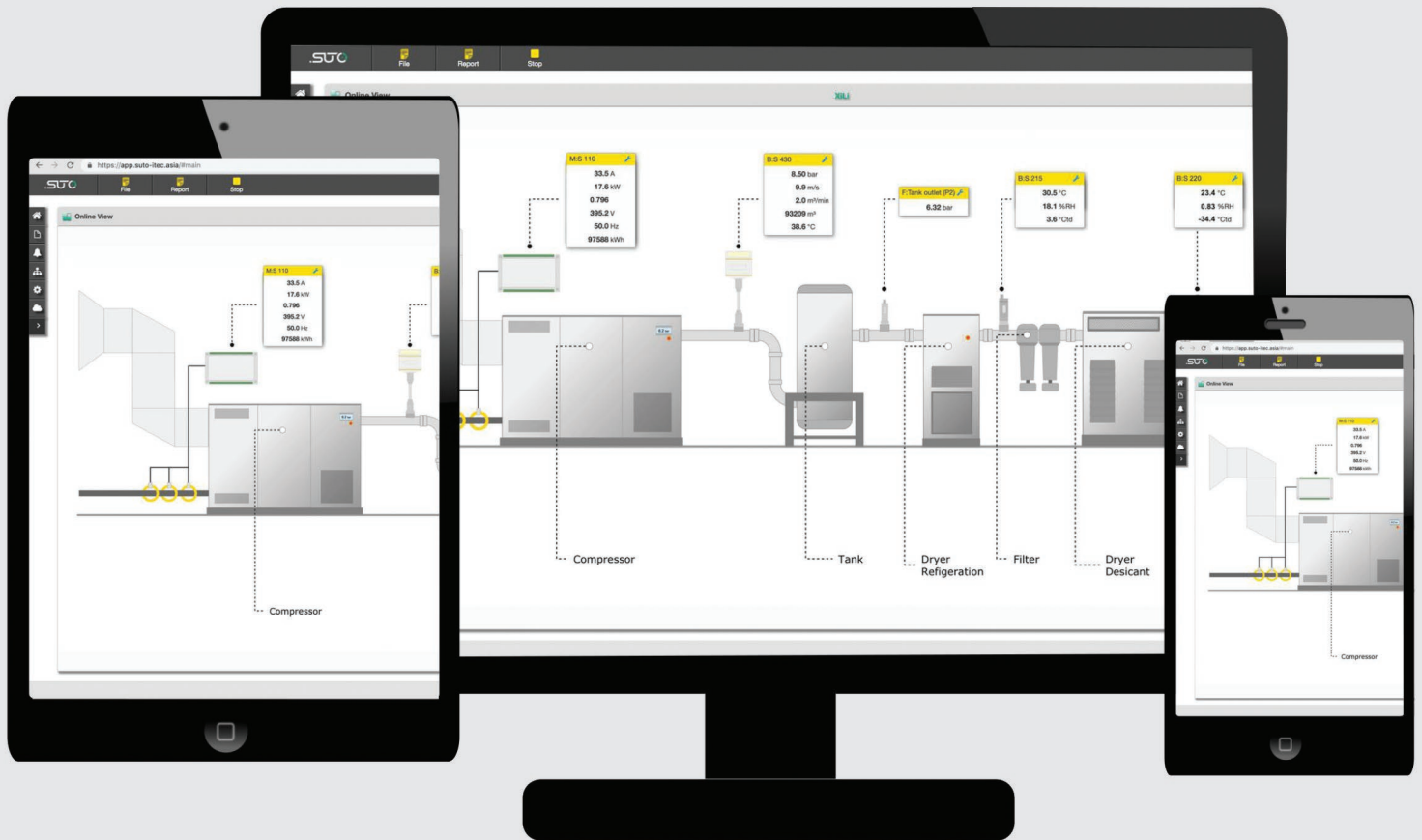
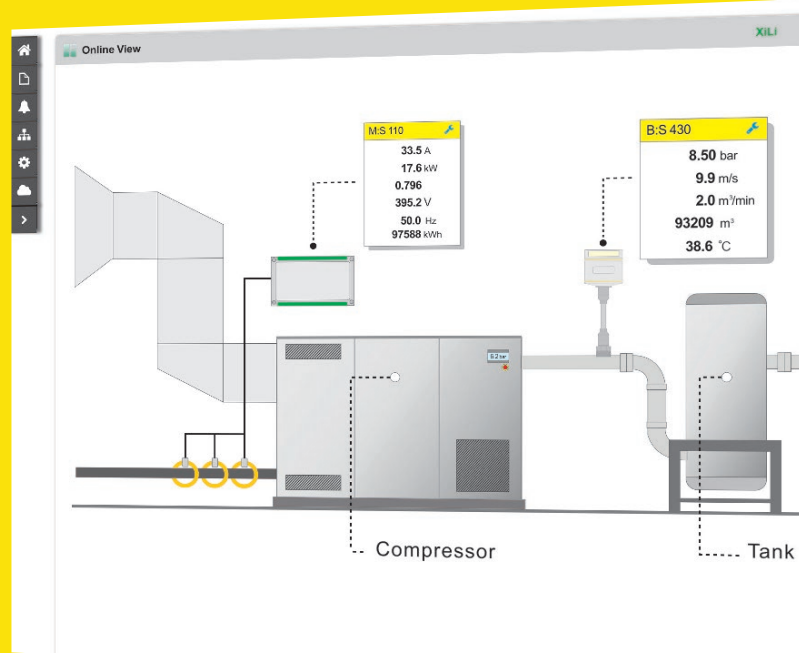


# SMART MONITORING SYSTEM S4M



# Your complete system — monitored and logged in a single software



## S4M FEATURES



**REMOTE ACCESS**  
Client needs only a web browser



**REPORT FUNCTION**  
Easy report generation



**EASY INSTALLATION**  
Wizard guided installation



**UNDER CONTROL**  
Alarm definition at a click



**DATA BASE**  
Data logging on server



**AUTO DETECT**  
System integration within seconds

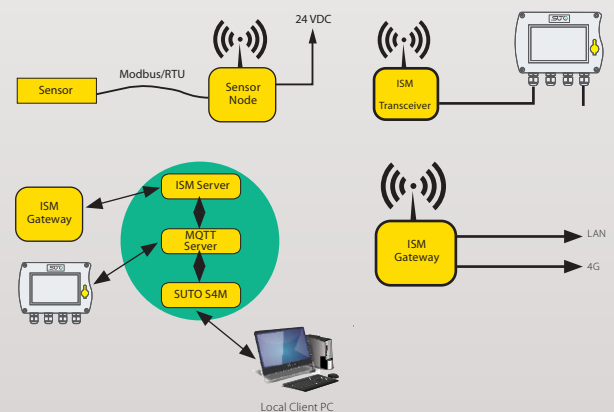
S4M is the complete monitoring solution for your energy management. It delivers real-time analytics of installations and can identify potential issues before they happen. S4M intelligently gathers, compares and analyses data to help compressed air users increase maintenance and service efficiency, make energy savings easy, quick and rewarding.

By server installation, and using the latest web technology, S4M is designed to provide cloud based service or local server installation, which allows user to monitor and collect granular, real-time energy consumption data of individual compressed air system anywhere at any time.

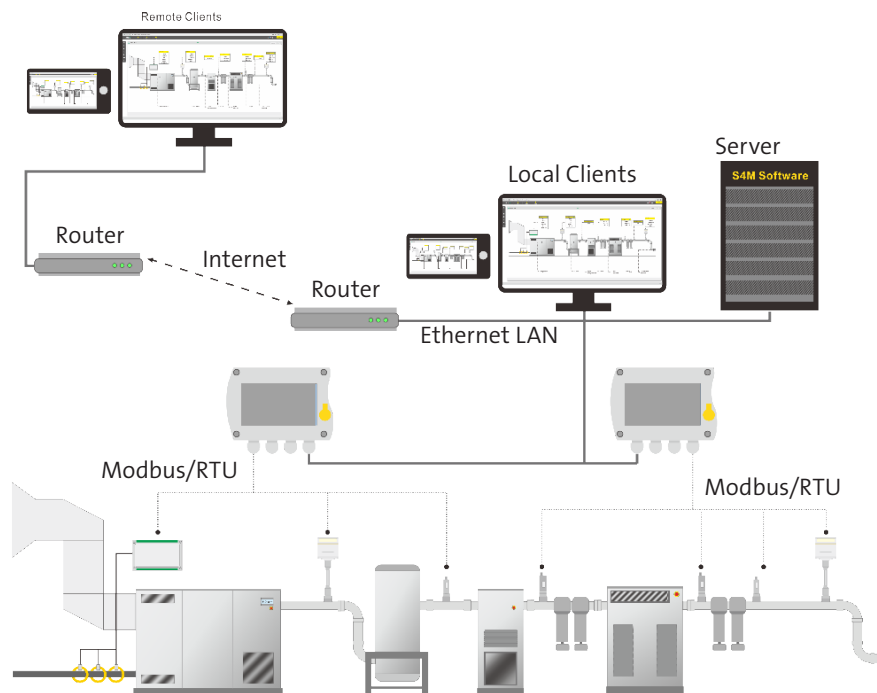
## S4M BENEFITS

- Easy to use monitoring solution
- Simple installation with installation wizard
- Browser / Server Architecture. Client is independent from any operation system.
- Alarm monitoring and indications on screen, relay, e-mail and SMS
- Graphical data analysis
- Multiple languages
- Third-party support
- Scalable to fit your application

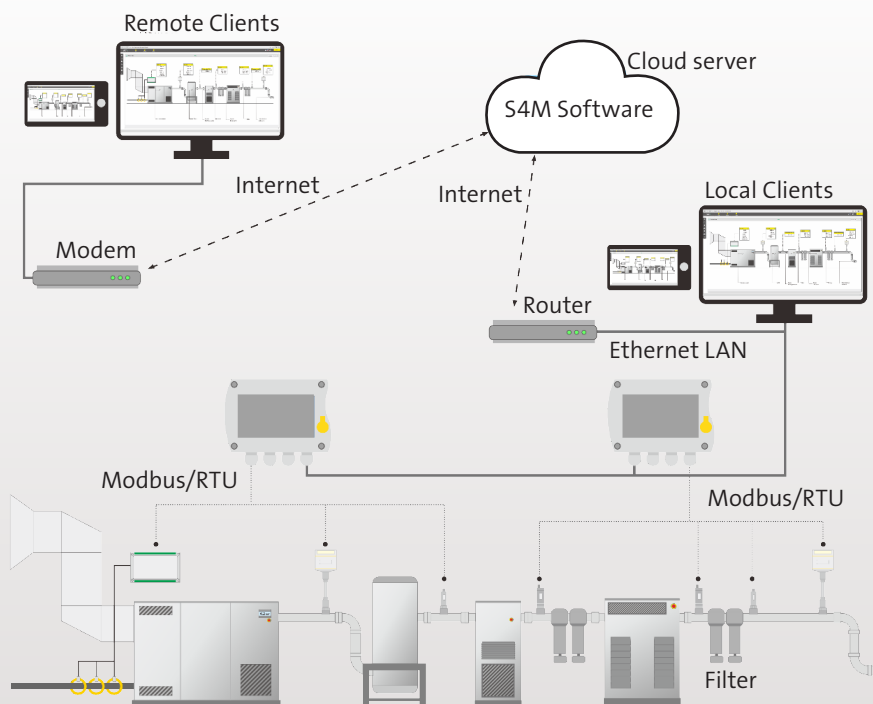
## S4M used for low power wide-area network solution



# S4M-your plant under control



## S4M Cloud Installation



S4M helps you to keep your plant under your control. Gathering the data of all installed sensors and measurement system. Combining them into a single software solution which enables you to take back the control of your system.

You want to try S4M?

Simply scan the code or visit <https://s4m.suto-itec.asia> to experience S4M.

username: **sutovisitor** password: **sutovisitor**



## S4M SYSTEM REQUIREMENTS

Category	Minimum	Recommended
Processor	Intel Core I5 processor 3.0GHz	Intel Core I7 processor 3.0GHz
RAM (main memory)	2G	>8G
Free disk space for installation	1.5G	>2G
Free disk space for measurement data in database	10G	>100G
Network card	Yes	YES

## S4M ORDERING

Please use the following table to assist in placing your order with our sales staff.



Visit our website or e-mail us:  
[www.suto-itec.com](http://www.suto-itec.com)  
[sales@suto-itec.com](mailto:sales@suto-itec.com)

S4M SMART MONITORING SYSTEM							
Order No.	Description	Details					
		Operating System		Supported Protocol(s)			
		Windows	Linux	SUTO	Modbus RTU	Modbus TCP	IIoT
M599 2031	S4M, local installation, data acquisition and analysis software, 50 measuring channels	●		●	●	●	●
M599 2032	S4M, local installation, data acquisition and analysis software, 100 measuring channels	●		●	●	●	●
M599 2033	S4M, local installation, data acquisition and analysis software, unlimited measuring channels	●		●	●	●	●
M599 2034	S4M, cloud installation, data acquisition and analysis software, 50 measuring channels		●				●
M599 2035	S4M, cloud installation, data acquisition and analysis software, 100 measuring channels		●				●
M599 2036	S4M, cloud installation, data acquisition and analysis software, unlimited measuring channels		●				●
Optional products or service							
A1102	Add-on Energy Manager to S4M						
M599 9000	Software setup, configuration and training						
A554 0027	GSM modem for SMS notifications, connectable to Windows server						